

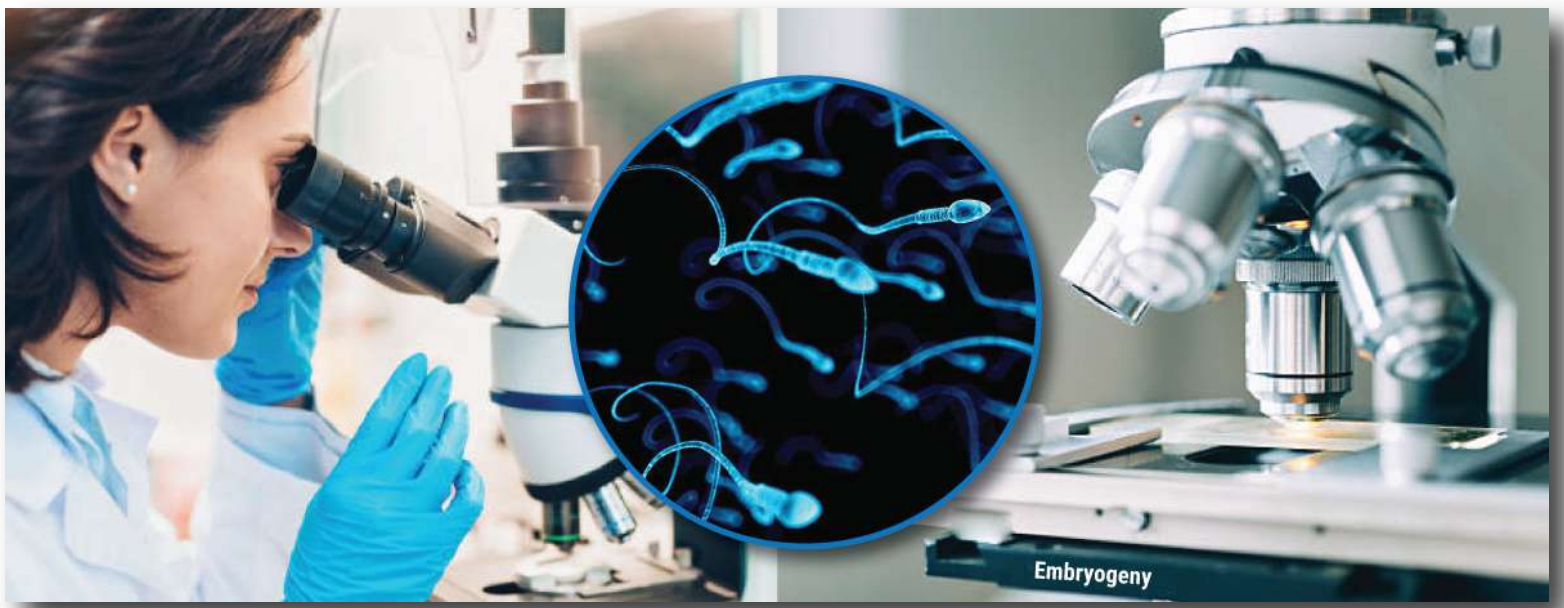


EMBRYOGENY

HANDS-ON | HYBRID | ONLINE

CURATED COURSES IN EMBRYOLOGY AND IVF BY EXPERTS

 www.embryologyivftraining.com  9644444066



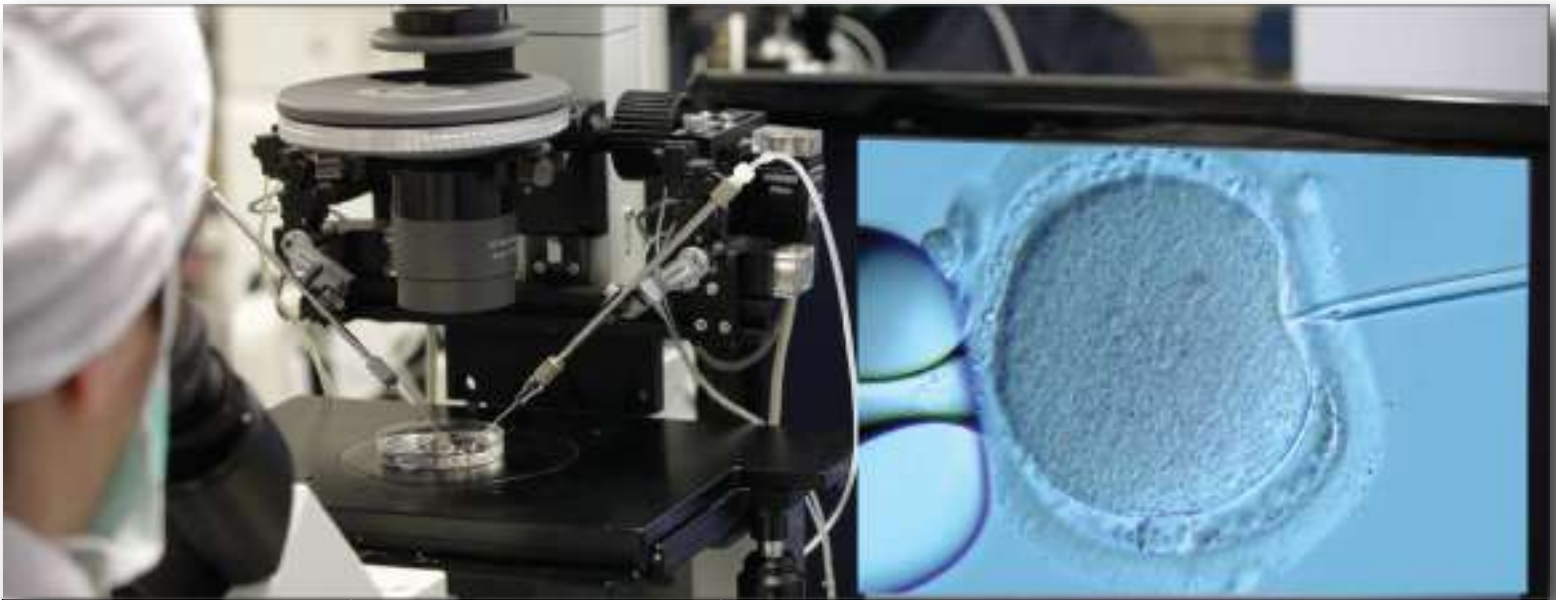
ANDROLOGY LAB TECHNICIAN COURSE - SEMEN ANALYSIS, PROCESSING & CRYOPRESERVATION

Orientation	Orientation of Andrology Lab
	Introduction to Andrology Lab Equipment , Instruments & Microscopes
	Overview of Disposables, consumables, Stains & Reagents
Semen Analysis & Sperm Function Test	Overview of WHO Manual 2020 6th Edition
	Overview of Semen Analysis (Macroscopic & Microscopic Assessment)
	Macroscopic Examination - Color, Odor, pH and Volume measurement
	Microscopic Examination - Concentration, Motility and Morphology
	Assessment of Count and Concentration using Counting Chamber
	Assessment of Vitality using Eosin
	Assessment of Sperm Motility
	Assessment of Sperm Morphology (Kruger's Criteria)
	Preparing Morphology Slides
	Reporting of Semen Analysis as per WHO 6th Edition
	Understanding Reference Range for Final Impression in the Report
	Optional Tests on Semen
	HOS Test - Hypo Osmotic Swelling Test for assessment of sperm vitality
	Fructose Test for Azoospermia
	Tips and Tricks for handling tricky semen samples
Handling highly viscous semen sample and reporting	
Handling Azoospermic and Cryptozoospermic samples	
Handling 100% immotile semen sample and reporting	
Importance of Round Cell assessment and Reporting	
Semen Sample Preparation Techniques	Semen Sample Preparation - Theory
	Various Methods (Simple Wash, Swim Up and Density Gradient)
	Simple Wash Technique - How & When
	Semen Sample preparation using Swim Up Method - How & When
	Semen Sample preparation using Double Density Gradient (How & When)
	Tips for creating stable interface
	Tips for best result of motile fraction in pellet
	Preparing TESA/PESA samples
	Reporting - IUI Sample Report (Demonstration & Practice)
	Do's and Don't while preparing sample for IVF/ICSI
Handling infectious sample (HIV, HbsAg etc)	
Semen Cryopreservation and Thawing	Principles of Slow Freezing and Thawing of Semen
	Semen Freezing for normal sample - Procedure
	Semen freezing for abnormal semen parameters - Procedure
	Thawing Frozen Semen Sample
	Methods for preparing semen sample after Thawing
Quality Assurance	Handling Storage Cans. Record Keeping and Cryosafety
	Cleaning of Andrology Lab. Daily Temperature Checks
	Infectious sample storage and record keeping
	QA QC of equipments



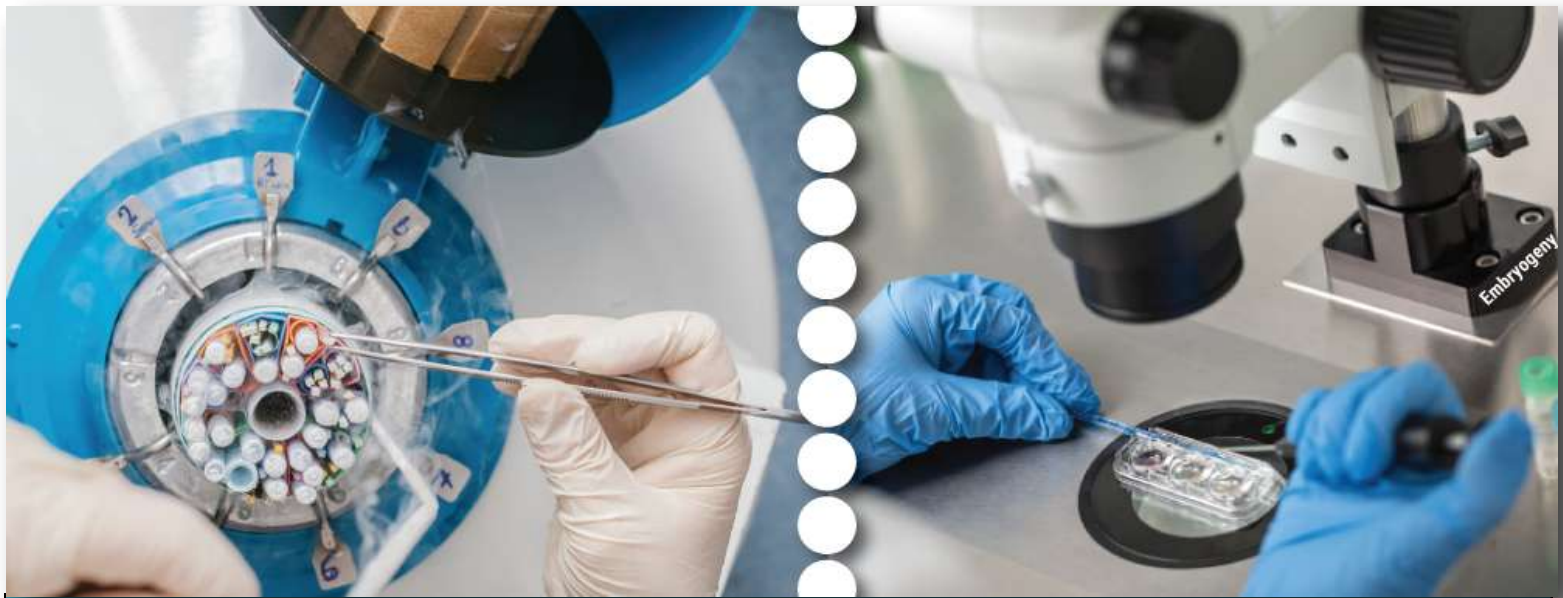
BASIC EMBRYOLOGY - COURSE CONTENT (FROM IVF TO ET)

Orientation	Orientation of IVF Lab Equipments, Disposables, Consumables etc
Ovum Pick Up	Folliculogenesis , Oogenesis and Spermatogenesis - Lecture
	IVF Stimulation Protocols - Lecture
	Embryo Culture System - Lecture
	OPU to Embryo Transfer - Time Line and Touch Points
	Evening Before OPU preparation - Plating/Media Equillibration
	Preparation before OPU
	Screening for Oocytes - Demonstration and Hands On
	OCC Grading and Best practices
Insemination IVF and ICSI	IVF Insemination
	How to prepare semen sample for IVF Insemination
	Calculating Volume of inseminate
	Types of IVF insemination protocols (Long Vs Short insemination)
	Partial denudation after insemination
	Assessment of Fertilization for IVF - Protocol.
	ICSI - Demonstration
	Denudation (Tips and Tricks) in Theory. Preparing Plate for Denudation. Demonstration
	ICSI Plating and Alignment Demonstration
	ICSI Machine brief Orientation
Sperm immobilization technique - Demonstration	
ICSI Process for Fertilization - Demonstration	
Embryo Assessment	2PN Check. Fertilization check, Cleavage Check.
	Assessment of Embryo on Day 3 and Day 5
	Stage wise Embryo Grading
	Record Keeping of Case - Embryology Sheet
Embryo Transfer	Preparing Embryo Transfer Dish.
	Preparing ET Dish with Embryo Glue and Likes
	ET Procedure - Demonstration and Mock ET Practice
	Handling difficult ET's - Tips and Tricks
Embryo/Oocyte Freezing	Embryo and Oocyte Freezing - Principles
	Preparation and Plating for Freezing
	Live demonstration of Embryo Freezing
	Maintaining Embryo Cryo Storage - Do's and Don'ts
	Record keeping, Consents and handling Embryo Straws and Cryostorage
Practice Vitrification of discarded Embryos/Oocytes	
Embryo/Oocyte Warming	Embryo and Oocyte Warming - Principles
	Preparation and Plating for Warming
	Live demonstration of Embryo Warming.
	Practice warming on discarded embryos
Surgical Sperm	TESA / PESA sample teasing and preparation - Theory
	Warming of Previously stored TESA Sample and locating live sperm - Demonstration
Quality Assurance of IVF Lab	QA - Daily, Weekly and Monthly activities in IVF Lab
	Cleaning of IVF Lab
	Maintenance and cleaning of Incubators (Contracon for Box Incubator)
	Maintenance and cleaning of Workbench Filters
	Daily Temperature monitoring
	QA QC of Lab equipments - Microscopes , Micromanipulator , Heating surfaces
Inventory check and management	



MICROMANIPULATION OF GAMETES - MASTERING ICSI

Preparing for ICSI	Preparation for ICSI
	Preparing Oocyte for ICSI - Denudation (Demonstration & Hands On)
	Preparing Sperm for ICSI
	ICSI Plating Demonstration & Hands On on Different Plating Styles
ICSI Machine Orientation	ICSI Machine - Know the Micromanipulator
	Parts of ICSI Machine, Controller, Syringes, Inverted Microscope
	Holding and Injection Pipette - Introduction to different Makes
	Alignment of Microtools - Demonstration & Hands On
Sperm Immobilization & Assessment	Sperm Immobilization and Assessment
	Real time assessment of Motile Sperm Morphology
	How to handle samples with very low sperm concentration
	How to handle TESA , PESA sperm samples
Injection Process	ICSI - Demonstration and Hands On
	Oocyte Morphology assessment and Injection basics
	Technique for oocyte Holding, Breaking Oolema and Injection
	ICSI Tips and Tricks - Do's and Don'ts
Hands On Injection & Immobilization	Practice on Unfertilized Oocytes (3 to 4 oocytes)
	Practice on Fresh Oocytes (upto 6 M2)
	Practice on Sperm Immobilization
Tips & Tricks of Micromanipulation & Special Cases	Assessment of Fertilization post ICSI
	Rescue ICSI - Should You ?
	TESA - Dealing with PESA and TESA Sperms - Tips and Tricks
	IVM - ICSI after maturation of GV and M1 - Timeline and Culture
Record Keeping & Documentation	Record Keeping - Embryology Sheet Entries
	What to record and how to record Oocyte Morphology



CRYOPRESERVATION OF GAMETES - VITRIFICATION & WARMING

Theory of Cryopreservation	Cryopreservation in Theory
	History of Cryopreservation of Gametes.
	Challenges in cryopreserving cells.
	How cryopreservation evolved over the years
	Types of Cryoprotectants and their properties
	Principle of Vitrification
Cryostorage Basics	Equipment, tools and media needed for Cryopreservation
	Types of Cryostorage Tanks
	Types of Cryostorage Media - Pro's and Con's
	Types of Cryo device - Pro's and Con's
	Practice locating Gobelets from Cryo Canister
Vitrification of Embryos (Cleavage and Blastocyst)	Vitrification of Embryos
	The Vitrification Protocol for Cleavage state Embryos
	Vitrification Protocol for Blastocysts
	Tips of best survival rate
	Hands-on Practice of Vitrification on discarded embryos
	To Do's and What Not To Do's during Vitrification
Vitrification of Oocytes	Oocyte Vitrification Basics
	Timeline for best survival and fertilization rates
	Challenges faced in Oocyte Vitrification. How many Oocytes per straw ?
	Basics of Oocyte Vitrification Protocol for different Vitrification Media
	Hands On Oocyte Vitrification
Cryogovernance and ART Rules	Cryogovernance & The ART Rules and Law
	Know the ART Rules related to long term cryostorage of gametes
	How to increase storage capacity for storing maximum gametes safely
	Tools for Cryo governance
	Consent and Documentation
Record Keeping & Documentation	Record Keeping - Embryology Sheet Entries and Cryostorage Sheets
	What information to record during gamete storage.
	Fail proof mechanism of maintaining and locating Patient Gametes



General Information

Full Name _____ **Age** _____

Qualification **Doctorate** _____

Masters _____

Bachelors _____

Current Designation & Work Experience _____

Contact Details

Address _____

whatsApp Number  _____ **Aadhar / Passport Number** _____

Email Id _____

Course Opted

- | | |
|---|---|
| <input type="checkbox"/> Comprehensive Clinical Embryology | <input type="checkbox"/> Comprehensive ART |
| <input type="checkbox"/> Advanced Clinical Embryology | <input type="checkbox"/> Advanced ART Techniques |
| <input type="checkbox"/> Oocyte/Embryo Vitrification | <input type="checkbox"/> Comprehensive IVF |
| <input type="checkbox"/> Standard Semen Analysis & Sperm Processing Techniques | <input type="checkbox"/> Transvaginal Ultrasound |
| <input type="checkbox"/> Paramedical Staff Training | <input type="checkbox"/> Clinical Andrology |

Additional Remarks
